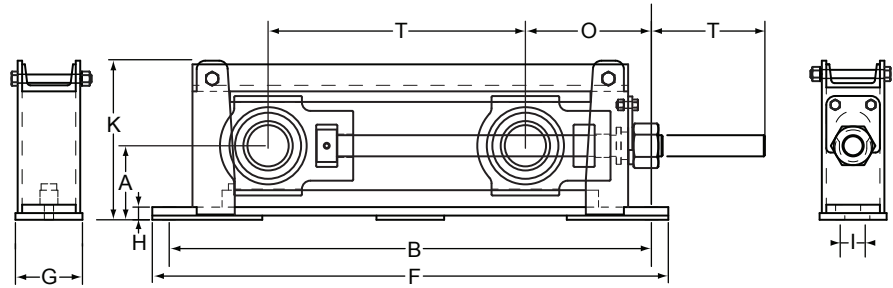


Heavy Duty Center-Pull Takeup Assembly

JHT-2000 / JHT-5000

Jones

- Self-aligning roller bearing
- Welded steel frame
- Metric sizes available



SHAFT DIA.	COMPLETE ASSY. NUMBER	COMPLETE ASSY. WT.	FRAME ASSY. ONLY	FRAME NET WT.	ALLOWABLE WORKING LOAD †	A	B	F	G	H	I	K	TRAVEL T	O	BOLTS REQ.	
															NO.	SIZE
1 ⁵ / ₁₆ 2	JHT6-2115 JHT6-2200	-12	73	JHT6-12	58	12,300	3 ¹ / ₁₆	27 ¹ / ₂	29 ¹ / ₂	4	7/8	8 ³ / ₁₆	15 ¹ / ₂	6 ³ / ₈	2	5/8
		-18	84	JHT6-18	69			33 ¹ / ₂	35 ¹ / ₂				21 ¹ / ₂			
		-24	95	JHT6-24	80			39 ¹ / ₂	41 ¹ / ₂				27 ¹ / ₂			
		-30	106	JHT6-30	91			45 ¹ / ₂	47 ¹ / ₂				33 ¹ / ₂			
		-36	117	JHT6-36	102			51 ¹ / ₂	53 ¹ / ₂				39 ¹ / ₂			
2 ³ / ₁₆	JHT7-2203	-12	85	JHT7-12	67	13,000	4 ⁷ / ₁₆	27 ¹ / ₂	29 ¹ / ₂	4	1 ³ / ₁₆	9	15	6 ³ / ₄	2	5/8
		-18	96	JHT7-18	78			33 ¹ / ₂	35 ¹ / ₂				21			
		-24	108	JHT7-24	90			39 ¹ / ₂	41 ¹ / ₂				27			
		-30	119	JHT7-30	101			45 ¹ / ₂	47 ¹ / ₂				33			
		-36	130	JHT7-36	112			51 ¹ / ₂	53 ¹ / ₂				39			
2 ⁷ / ₁₆ 2 ¹ / ₂	JHT8-2207 JHT8-2208	-12	98	JHT8-12	74	16,300	4 ³ / ₈	28 ¹ / ₂	30 ¹ / ₂	4	3/4	9 ³ / ₁₆	15	7 ¹ / ₂	2	3/4
		-18	110	JHT8-18	86			34 ¹ / ₂	36 ¹ / ₂				21			
		-24	122	JHT8-24	98			40 ¹ / ₂	42 ¹ / ₂				27			
		-30	134	JHT8-30	110			46 ¹ / ₂	48 ¹ / ₂				33			
		-36	146	JHT8-36	122			52 ¹ / ₂	54 ¹ / ₂				39			
2 ¹ / ₁₆ 2 ¹ / ₁₆ 3	JHT9-2211 JHT9-2215 JHT9-2300	-12	145	JHT9-12	115	26,800	5 ¹ / ₈	30 ¹ / ₂	32 ¹ / ₂	5	1 ¹ / ₈	2	10 ⁷ / ₈	8 ¹ / ₈	4	5/8
		-18	161	JHT9-18	131			36 ¹ / ₂	38 ¹ / ₂				22			
		-24	175	JHT9-24	145			42 ¹ / ₂	44 ¹ / ₂				28			
		-30	195	JHT9-30	165			48 ¹ / ₂	50 ¹ / ₂				34			
		-36	202	JHT9-36	182			54 ¹ / ₂	56 ¹ / ₂				40			
3 ⁷ / ₁₆ 3 ¹ / ₂	JHT10-2307 JHT10-2308	-12	161	JHT10-12	126	27,300	5 ⁵ / ₈	32	34 ¹ / ₂	5	1 ¹ / ₈	2	11 ¹ / ₁₆	8 ³ / ₄	4	3/4
		-18	180	JHT10-18	145			38	40 ¹ / ₄				22			
		-24	199	JHT10-24	164			44	46 ¹ / ₄				28			
		-30	218	JHT10-30	183			50	52 ¹ / ₄				34			
		-36	237	JHT10-36	202			56	58 ¹ / ₄				40			
3 ¹ / ₁₆ 3 ⁵ / ₁₆ 4	JHT11-2311 JHT11-2315 JHT11-2400	-12	244	JHT11-12	195	38,400	7	36	38 ¹ / ₂	6	1 ³ / ₈	2 ¹ / ₂	14 ³ / ₈	10 ⁵ / ₈	4	3/4
		-18	276	JHT11-18	227			42	44 ¹ / ₂				23 ¹ / ₂			
		-24	302	JHT11-24	253			48	50 ¹ / ₂				28 ¹ / ₂			
		-30	327	JHT11-30	278			54	56 ¹ / ₂				35 ¹ / ₂			
		-36	353	JHT11-36	304			60	62 ¹ / ₂				40 ¹ / ₂			
4 ⁷ / ₁₆ 4 ¹ / ₂	JHT12-5407 JHT12-5408	-12	363	JHT12-12	279	53,300	7 ¹ / ₂	40 ³ / ₄	45 ³ / ₄	8 ⁷ / ₈	1 ³ / ₈	5	15 ¹ / ₂	12 ¹ / ₄	4	1 ¹ / ₈
		-18	391	JHT12-18	307			46 ³ / ₄	51 ³ / ₄				25			
		-24	418	JHT12-24	334			52 ³ / ₄	57 ³ / ₄				31			
		-30	447	JHT12-30	363			58 ³ / ₄	63 ³ / ₄				37			
		-36	468	JHT12-36	384			64 ³ / ₄	69 ³ / ₄				43			
-42	504	JHT12-42	420	70 ³ / ₄	75 ³ / ₄	49										
4 ¹ / ₁₆ 5	JHT13-5415 JHT13-5500	-12	440	JHT13-12	310	68,000	8 ¹ / ₈	44 ¹ / ₂	49 ¹ / ₂	9 ⁷ / ₈	1	5 ¹ / ₂	16 ³ / ₄	13 ¹ / ₂	4	1 ¹ / ₈
		-18	460	JHT13-18	330			50 ¹ / ₂	55 ¹ / ₂				26 ¹ / ₄			
		-24	496	JHT13-24	365			56 ¹ / ₂	61 ¹ / ₂				32 ¹ / ₄			
		-30	527	JHT13-30	397			62 ¹ / ₂	67 ¹ / ₂				38 ¹ / ₄			
		-36	555	JHT13-36	425			68 ¹ / ₂	73 ¹ / ₂				44 ¹ / ₄			
-42	587	JHT13-42	457	74 ¹ / ₂	79 ¹ / ₂	50 ¹ / ₄										
5 ⁷ / ₁₆	JHT14-5507	-18	1293	JHT14-18	876	136,700	10 ⁹ / ₁₆	55	61	9 ⁷ / ₈	1	5 ¹ / ₂	16 ³ / ₄	13 ¹ / ₂	4	1 ¹ / ₈
		-30	1420	JHT14-30	1003			67	73				30			
		-42	1547	JHT14-42	1130			79	85				42			
5 ¹ / ₁₆ 6	JHT15-5515 JHT15-5600	-18	1300	JHT15-18	878	136,700	10 ⁹ / ₁₆	55	61	12	1 ¹ / ₂	7	22 ¹ / ₂	23 ¹ / ₂	4	1 ³ / ₄
		-30	1427	JHT15-30	995			67	73				30			
		-42	1547	JHT15-42	1121			79	85				42			
6 ⁷ / ₁₆ 6 ¹ / ₁₆ 7	JHT16-5607 JHT16-5615 JHT16-6700	-18	1304	JHT16-18	876	136,700	10 ⁹ / ₁₆	55	61	12	1 ¹ / ₂	7	22 ¹ / ₂	23 ¹ / ₂	4	1 ³ / ₄
		-30	1431	JHT16-30	1003			67	73				30			
		-42	1558	JHT16-42	1130			79	85				42			

NOTES: 1) Dimensions subject to change. Certified dimensions of ordered material furnished on request.

2) For takeup blocks, see page 5.

† Allowable working load is 2/3 yield strength.