

JA-2000 Series

Pillow Blocks (2-Bolt)

Jones

....Since 1890



SHAFT DIA	PART #	WEIGHT (LBS)	INTERCHANGE				
			REX	LINKBELT	DODGE	SKF	QM / TIMKEN
1 7/16	JA2107	6.5	ZA2107	PB22423H	EP2B-S2-107R	SYR 1 7/16	
1 1/2	JA2108	6.5	ZA2108	PB22424H	EP2B-S2-108R	SYR 1 1/2	
1 11/16	JA2111	8.5	ZA2111	PB22427H	EP2B-S2-111R	SYR 1 11/16	
1 3/4	JA2112	8	ZA2112	PB22428H	EP2B-S2-112R	SYR 1 3/4	
1 15/16	JA2115	10.5	ZA2115	PB22431H	EP2B-S2-115R	SYR 1 15/16	QAPL10A115ST
2	JA2200	10	ZA2200	PB22432H	EP2B-S2-200R	SYR 2	QAPL10A200ST
2 3/16	JA2203	12	ZA2203	PB22435H	EP2B-S2-203R	SYR 2 3/16	QAPL11A203ST
2 7/16	JA2207	18	ZA2207	PB22439H	EP2B-S2-207R	SYR 2 7/16	QAPL13A207ST
2 1/2	JA2208	17	ZA2208	PB22440H	EP2B-S2-208R	SYR 2 1/2	QAPL13A208ST
2 11/16	JA2211	24	ZA2211	PB22443H	EP2B-S2-211R	SYR 2 11/16	QAPL15A211ST
2 3/4	JA2212	24	ZA2212	PB22444H	EP2B-S2-212R	SYR 2 3/4	QAPL15A212ST
2 15/16	JA2215	22	ZA2215	PB22447H	EP2B-S2-215R	SYR 2 15/16	QAPL15A215ST
3	JA2300	22	ZA2300	PB22448H	EP2B-S2-300R	SYR 3	QAPL15A300ST
3 7/16	JA2307	34	ZA2307	PB22455H	EP2B-S2-307R	SYR 3 7/16	QAPL18A307ST
3 1/2	JA2308	33.8	ZA2308	PB22456H	EP2B-S2-308R	SYR 3 1/2	QAPL18A308ST
3 11/16	JA2311	49.8	ZA2311	PB22459H	EP2B-S2-311R	SYR 3 11/16	
3 15/16	JA2315	48	ZA2315	PB22463H	EP2B-S2-315R	SYR 3 15/16	QAPL20A315ST
4	JA2400	48	ZA2400	PB22464H	EP2B-S2-400R	SYR 4	QAPL20A400ST

**Bearings come standard as non-expansion (NXP) for an expansion unit please specify EXP at the end of the part number (i.e. JA2207-EXP)

JE-2000 Series

Pillow Blocks (2-Bolt)

Jones

....Since 1890



SHAFT DIA	PART #	WEIGHT (LBS)	INTERCHANGE				
			REX	LINKBELT	DODGE	SKF	QM / TIMKEN
1 7/16	JE2107	6.5	ZEP2107	EPB22423H	P2B-E-107R	SYE 1 7/16	
1 1/2	JE2108	6.5	ZEP2108	EPB22424H	P2B-E-108R	SYE 1 1/2	
1 11/16	JE2111	8.5	ZEP2111	EPB22427H	P2B-E-111R	SYE 1 11/16	
1 3/4	JE2112	8	ZEP2112	EPB22428H	P2B-E-112R	SYE 1 3/4	
1 15/16	JE2115	10.5	ZEP2115	EPB22431H	P2B-E-115R	SYE 1 15/16	QAP10A115ST
2	JE2200	10	ZEP2200	EPB22432H	P2B-E-200R	SYE 2	QAP10A200ST
2 3/16	JE2203	12	ZEP2203	EPB22435H	P2B-E-203R	SYE 2 3/16	QAP11A203ST
2 7/16	JE2207	18	ZEP2207	EPB22439H	P2B-E-207R	SYE 2 7/16	QAP13A207ST
2 1/2	JE2208	17	ZEP2208	EPB22440H	P2B-E-208R	SYE 2 1/2	QAP13A208ST
2 11/16	JE2211	24	ZEP2211	EPB22443H	P2B-E-211R	SYE 2 11/16	QAP15A211ST
2 3/4	JE2212	24	ZEP2212	EPB22444H	P2B-E-212R	SYE 2 3/4	QAP15A212ST
2 15/16	JE2215	22	ZEP2215	EPB22447H	P2B-E-215R	SYE 2 15/16	QAP15A215ST
3	JE2300	22	ZEP2300	EPB22448H	P2B-E-300R	SYE 3	QAP15A300ST
3 7/16	JE2307	34	ZEP2307	EPB22455H	P2B-E-307R	SYE 3 7/16	QAP18A307ST
3 1/2	JE2308	33.8	ZEP2308	EPB22456H	P2B-E-308R	SYE 3 1/2	QAP18A308ST

**Bearings come standard as non-expansion (NXP) for an expansion unit please specify EXP at the end of the part number (i.e. JE2207-EXP)

JE-2000 Series

Pillow Blocks (4-Bolt)

Jones

....Since 1890



SHAFT DIA	PART #	WEIGHT (LBS)	INTERCHANGE				
			REX	LINKBELT	DODGE	SKF	QM/TIMKEN
2 7/16	JE2207F	18	ZEP2207F	EPB22439FH	P4B-E-207R	FSYE 2 7/16	QAPR13A207ST
2 1/2	JE2208F	17	ZEP2208F	EPB22440FH	P4B-E-208R	FSYE 2 1/2	QAPR13A208ST
2 11/16	JE2211F	24	ZEP2211F	EPB22443FH	P4B-E-211R	FSYE 2 11/16	QAPR15A211ST
2 3/4	JE2212F	24	ZEP2212F	EPB22444FH	P4B-E-212R	FSYE 2 3/4	QAPR15A212ST
2 15/16	JE2215F	22	ZEP2215F	EPB22447FH	P4B-E-215R	FSYE 2 15/16	QAPR15A215ST
3	JE2300F	22	ZEP2300F	EPB22448FH	P4B-E-300R	FSYE 3	QAPR15A300ST
3 7/16	JE2307F	34	ZEP2307F	EPB22455FH	P4B-E-307R	FSYE 3 7/16	QAPR18A307ST
3 1/2	JE2308F	33.8	ZEP2308F	EPB22456FH	P4B-E-308R	FSYE 3 1/2	QAPR18A308ST
3 11/16	JE2311F	49.8	ZEP2311F	EPB22459FH	P4B-E-311R	FSYE 3 11/16	
3 15/16	JE2315F	48	ZEP2315F	EPB22463FH	P4B-E-315R	FSYE 3 15/16	QAPF20A315ST
4	JE2400F	48	ZEP2400F	EPB22464FH	P4B-E-400R	FSYE 4	QAPF20A400ST
4 7/16	JE5407F	75		EPB22571YFH	P4B-E-407R		QAPF22A407ST
4 15/16	JE5415F	106		EPB22579YFH	P4B-E-415R		QAPF26A415ST

**Bearings come standard as non-expansion (NXP) for an expansion unit please specify EXP at the end of the part # (i.e. JE2207F-EXP)

JYR-2000 Series Flange Bearing

Jones

....Since 1890



SHAFT DIA	PART #	WEIGHT (LBS)	INTERCHANGE				
			REX	LINKBELT	DODGE	SKF	QM/TIMKEN
1 7/16	JYR2107	7	ZB2107	FB22423H	F3R-S2-107R	FYR 1 7/16	
1 1/2	JYR2108		ZB2108	FB22424H	F3R-S2-108R	FYR 1 1/2	
1 11/16	JYR2111	10	ZB2111	FB22427H	F4R-S2-111R	FYR 1 11/16	
1 3/4	JYR2112		ZB2112	FB22428H	F4R-S2-112R	FYR 1 3/4	
1 15/16	JYR2115	12	ZB2115	FB22431H	F4R-S2-115R	FYR 1 15/16	QAFY10A115ST
2	JYR2200		ZB2200	FB22432H	F4R-S2-200R	FYR 2	QAFY10A200ST
2 3/16	JYR2203	13.5	ZB2203	FB22435H	F4R-S2-203R	FYR 2 3/16	QAFY11A203ST
2 7/16	JYR2207	20	ZB2207	FB22439H	F4R-S2-207R	FYR 2 7/16	QAFY13A207ST
2 1/2	JYR2208		ZB2208	FB22440H	F4R-S2-208R	FYR 2 1/2	QAFY13A208ST
2 11/16	JYR2211	27	ZB2211	FB22443H	F4R-S2-211R	FYR 2 11/16	QAFY15A211ST
2 3/4	JYR2212		ZB2212	FB22444H	F4R-S2-212R	FYR 2 3/4	QAFY15A212ST
2 15/16	JYR2215	26	ZB2215	FB22447H	F4R-S2-215R	FYR 2 15/16	QAFY15A215ST
3	JYR2300		ZB2300	FB22448H	F4R-S2-300R	FYR 3	QAFY15A300ST
3 7/16	JYR2307	40	ZB2307	FB22455H		FYR 3 7/16	QAFY18A307ST
3 1/2	JYR2308		ZB2308				QAFY18A308ST
3 11/16	JYR2311	55	ZB2311				
3 15/16	JYR2315		ZB2315				QAFY20A315ST
4	JYR2400		ZB2400				QAFY20A400ST
4 7/16	JYR5407	98					
4 15/16	JYR5415	145					

**Bearings come standard as non-expansion (NXP) for an expansion unit please specify EXP at the end of the part number (i.e. JYR2207EXP)

JYRP-2000 Series

Piloted Flange

Jones

....Since 1890



SHAFT DIA	PART #	WEIGHT (LBS)	INTERCHANGE				
			REX	LINKBELT	DODGE	SKF	QM/TIMKEN
1 7/16	JYRP2107	6.3	ZBR2107	FCB22423H	FC-S2-107R	FYRP 1 7/16	
1 1/2	JYRP2108		ZBR2108	FCB22424H	FC-S2-108R	FYRP 1 1/2	
1 11/16	JYRP2111	7.5	ZBR2111	FCB22427H	FC-S2-111R	FYRP 1 11/16	
1 3/4	JYRP2112		ZBR2112	FCB22428H	FC-S2-112R	FYRP 1 3/4	
1 15/16	JYRP2115	8.5	ZBR2115	FCB22431H	FC-S2-115R	FYRP 1 15/16	QACW10A115ST
2	JYRP2200		ZBR2200	FCB22432H	FC-S2-200R	FYRP 2	QACW10A200ST
2 3/16	JYRP2203	11	ZBR2203	FCB22435H	FC-S2-203R	FYRP 2 3/16	QACW11A203ST
2 7/16	JYRP2207	14	ZBR2207	FCB22439H	FC-S2-207R	FYRP 2 7/16	QACW13A207ST
2 1/2	JYRP2208		ZBR2208	FCB22440H	FC-S2-208R	FYRP 2 1/2	QACW13A208ST
2 11/16	JYRP2211	20.5	ZBR2211	FCB22443H	FC-S2-211R	FYRP 2 11/16	QACW15A211ST
2 3/4	JYRP2212		ZBR2212	FCB22444H	FC-S2-212R	FYRP 2 3/4	QACW15A212ST
2 15/16	JYRP2215	19.5	ZBR2215	FCB22447H	FC-S2-215R	FYRP 2 15/16	QACW15A215ST
3	JYRP2300		ZBR2300	FCB22448H	FC-S2-300R	FYRP 3	QACW15A300ST
3 7/16	JYRP2307	32	ZBR2307	FCB22455H	FC-S2-307R	FYRP 3 7/16	QACW18A307ST
3 1/2	JYRP2308		ZBR2308	FCB22456H	FC-S2-308R		QACW18A308ST
3 11/16	JYRP2311	41	ZBR2311	FCB22459H	FC-S2-311R		
3 15/16	JYRP2315		ZBR2315	FCB22463H	FC-S2-315R		QACW20A315ST
4	JYRP2400		ZBR2400	FCB22464H	FC-S2-400R		QACW20A400ST
4 7/16	JYRP5407	64	ZBR5407Y		FC-S2-407R		
4 15/16	JYRP5415	72	ZBR5415		FC-S2-415R		

*Bearings come standard as non-expansion (NXP) for an expansion unit please specify EXP at the end of the part number (i.e. JYRP2207EXP)

JN-2000 Series

Top Angle Take-Up

Jones

....Since 1890



SHAFT DIA	PART #	WEIGHT (LBS)	INTERCHANGE					
			REX	LINKBELT	SKF	DODGE	SUPERIOR	PPI
1 11/16	JN2111	13	ZN2111	DSB22427H	TRH 1 11/16	These Bearings are not interchangeable with industry standards. They use a round bar on the base instead of channel. The complete assembly is interchangeable but the frame is not.		
1 3/4	JN2112		ZN2112	DSB22428H	TRH 1 3/4			
1 15/16	JN2115	15	ZN2115	DSB22431H	TRH 1 15/16			
2	JN2200		ZN2200	DSB22432H	TRH 2			
2 3/16	JN2203	17	ZN2203	DSB22435H	TRH 2 3/16			
2 7/16	JN2207	22	ZN2207	DSB22439H	TRH 2 7/16			
2 1/2	JN2208		ZN2208	DSB22440H	TRH 2 1/2			
2 11/16	JN2211	30	ZN2211	DSB22443H	TRH 2 11/16			
2 3/4	JN2212		ZN2212	DSB22444H	TRH 2 3/4			
2 15/16	JN2215	30	ZN2215	DSB22447H	TRH 2 15/16			
3	JN2300		ZN2300	DSB22448H	TRH 3			
3 7/16	JN2307	44	ZN2307	DSB22455H	TRH 3 7/16			
3 1/2	JN2308		ZN2308	DSB22456H	TRH 3 1/2			
3 11/16	JN2311	97	ZN2311	DSB22459H				
3 15/16	JN2315		ZN2315	DSB22463H	TRH 3 15/16			
4	JN2400		ZN2400	DSB22464H	TRH 4			

**Bearings come standard as non-expansion (NXP) for an expansion unit please specify EXP at the end of the part number (i.e. JN2207EXP)

JT-2000 Series

Center Pull Take-Up

Jones

....Since 1890



SHAFT DIA	PART #	WEIGHT (LBS)	INTERCHANGE				
			REX	LINKBELT	DODGE	SKF	QM/TIMKEN
1 11/16	JT2111	10	ZT2111	TB22427H	WSTU-S2-111R	TBR 1 11/16	
1 3/4	JT2112		ZT2112	TB22428H	WSTU-S2-112R	TBR 1 3/4	
1 15/16	JT2115	10	ZT2115	TB22431H	WSTU-S2-115R	TBR 1 15/16	QATU10A115ST
2	JT2200		ZT2200	TB22432H	WSTU-S2-200R	TBR 2	QATU10A200ST
2 3/16	JT2203	13.5	ZT2203	TB22435H	WSTU-S2-203R	TBR 2 3/16	QATU11A203ST
2 7/16	JT2207	18	ZT2207	TB22439H	WSTU-S2-207R	TBR 2 7/16	QATU13A207ST
2 1/2	JT2208		ZT2208	TB22440H	WSTU-S2-208R	TBR 2 1/2	QATU13A208ST
2 11/16	JT2211	28	ZT2211	TB22443H	WSTU-S2-211R	TBR 2 11/16	QATU15A211ST
2 3/4	JT2212		ZT2212	TB22444H	WSTU-S2-212R	TBR 2 3/4	QATU15A212ST
2 15/16	JT2215	28	ZT2215	TB22447H	WSTU-S2-215R	TBR 2 15/16	QATU15A215ST
3	JT2300		ZT2300	TB22448H	WSTU-S2-300R	TBR 3	QATU15A300ST
3 7/16	JT2307	40.5	ZT2307	TB22455H	WSTU-S2-307R	TBR 3 7/16	QATU18A307ST
3 1/2	JT2308		ZT2308	TB22456H	WSTU-S2-308R	TBR 3 1/2	QATU18A308ST
3 11/16	JT2311	58	ZT2311	TB22459H	WSTU-S2-311R	TBR 3 11/16	
3 15/16	JT2315		ZT2315	TB22463H	WSTU-S2-315R	TBR 3 15/16	QATU20A315ST
4	JT2400		ZT2400	TB22464H	WSTU-S2-400R	TBR 4	QATU20A400ST
4 7/16	JT5407	90					
4 15/16	JT5415	130					

****Bearings come standard as non-expansion (NXP) for an expansion unit please specify EXP at the end of the part number (i.e. JT2207EXP)**

JNT-2000 Series

Top Angle Take-Up Frame

Jones

....Since 1890



SHAFT DIA	PART #	INTERCHANGE						
		REX	LINKBELT	SKF	PPI	DODGE	Martin	Superior
1 15/16	JNT6-	ZNT6-	DSB22431H-	PA-1	PPA200-	These Frames are not interchangeable with industry standards. They use a round bar on the base instead of channel. The complete assembly is interchangeable but the frame is not.		
2								
2 3/16	JNT7-	ZNT7-	DSB22435H-	PA-2	PPA203-			
2 7/16	JNT8-	ZNT8-	DSB22439H-	PA-11	PPA208-			
2 1/2								
2 15/16	JNT9-	ZNT9-	DSB22447H-	PA-4	PPA300-			
3								
3 7/16	JNT10-	ZNT10-	DSB22455H	PA-5	PPA308-			
3 1/2								
3 15/16	JNT11-	ZNT11-	DSB22463H-	PA-6	PPA400-			
4								
4 7/16	JNT10-							
4 15/16	JNT11-							

JHT-2000 Series

Center Pull Take-Up Frame

Jones

....Since 1890



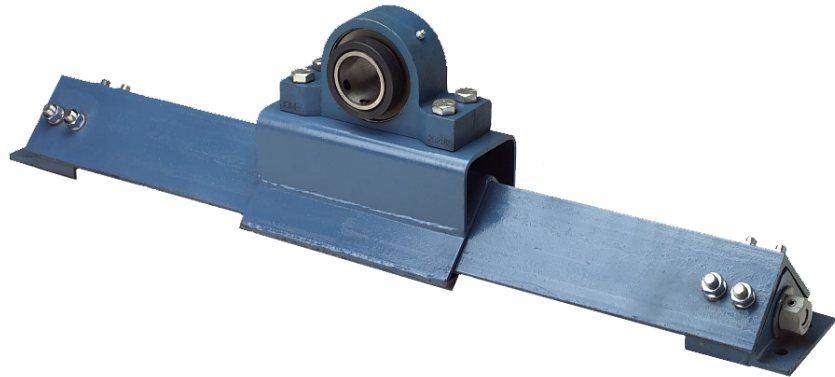
SHAFT DIA	PART #	INTERCHANGE				
		REX	DODGE	PPI	Martin	Superior
1 15/16	JHT6-	ZHT6-	CP400-	PCP200-	MCP400-	TUCP400-
2						
2 3/16	JHT7-	ZHT7-	CP408-	PCP203-	MCP408-	TUCP408-
2 7/16	JHT8-	ZHT8-	CP502-	PCP208-	MCP502-	TUCP502-
2 1/2						
2 15/16	JHT9-	ZHT9-	CP515-	PCP300-	MCP515-	TUCP515-
3						
3 7/16	JHT10-	ZHT10-	CP613-	PCP308-	MCP613-	TUCP613-
3 1/2						
3 15/16	JHT11-	ZHT11-	CP810-	PCP400-	MCP810-	TUCP810-
4						
4 7/16	JHT12-	ZHT12-	CP908-	PCP408-		TUCP908-
4 15/16	JHT13-	ZHT13-	CP1004-	PCP500-		TUCP1004-

TFT-2000 Series

Pillow Block Take-Up Frame

Jones

....Since 1890



SHAFT DIA	PART #	INTERCHANGE					
		LINKBELT	DODGE	SKF	PPI	Martin	Superior
1 15/16	TFT200-	LHD20-	HD200-	TFT2-	PHD200-	MHD200-	TUHD200-
2							
2 3/16							
2 7/16							
2 1/2			TFT3-				
2 15/16	TFT250-	LHD25-	HD250-	TFT4-	PHD208-	MHD250-	TUHD250-
3							
3 7/16	TFT350-	LHD35-	HD350-	TFT6-	PHD308-	MHD350-	TUHD350-
3 1/2							
3 15/16	TFT400-	LHD40-	HD400-	TFT7-	PHD400-	MHD400-	TUHD400-
4							